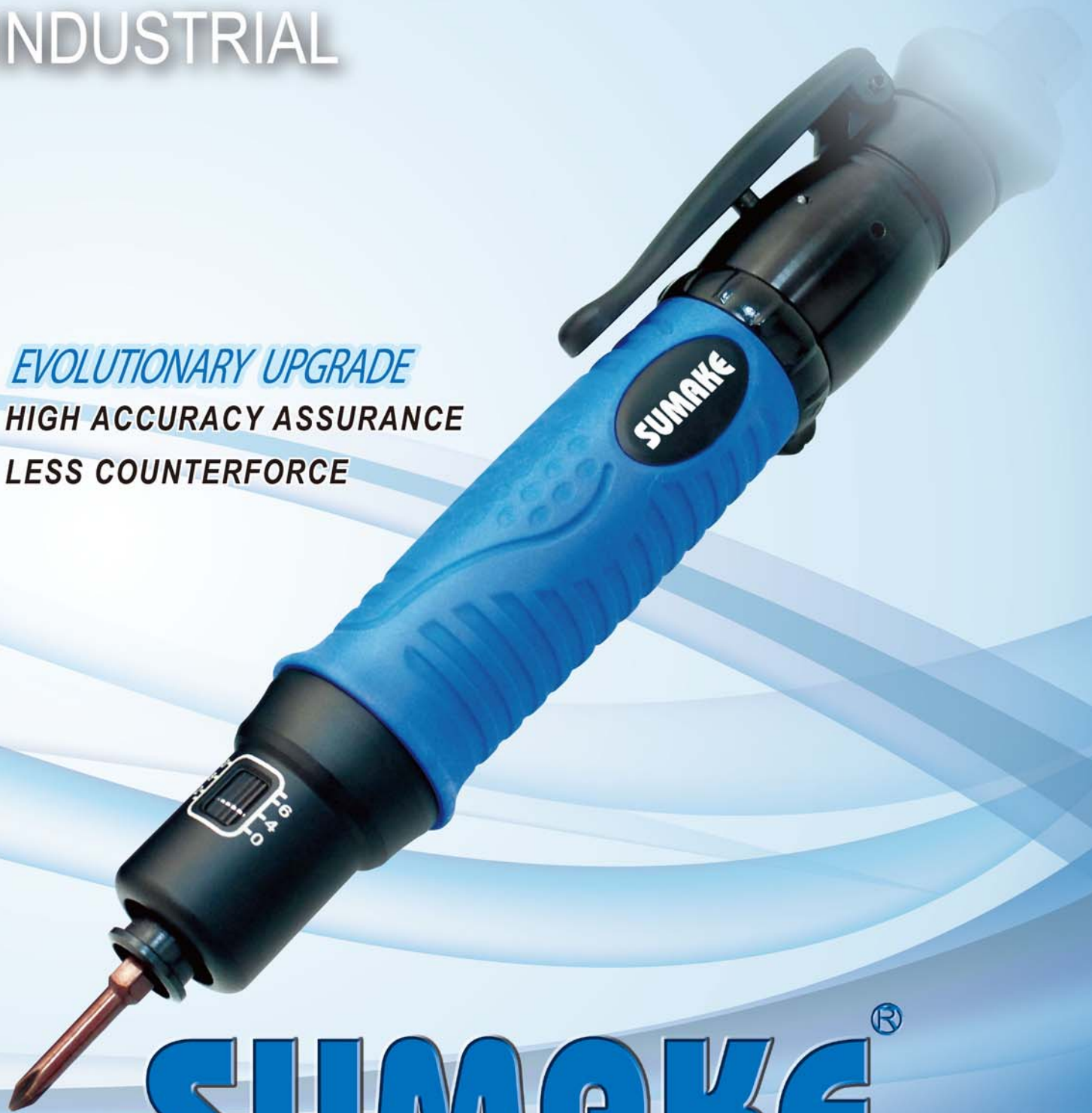


AIR SCREWDRIER & WRENCH INDUSTRIAL



EVOLUTIONARY UPGRADE
HIGH ACCURACY ASSURANCE
LESS COUNTERFORCE



SUMAKE®

MAKE JOBS BETTER THAN EVER

● An Evolutionary Upgrade of Full Auto Shut-off Air Screwdriver ●



Model No.	Free Speed (r.p.m.)	Torque range $\pm 3\%$		Noise (± 2 dB)
		Nm	Kgf-cm	
FP(FL/FA)002	1000	0.05-0.22	0.5-2.2	68
FP(FL/FA)010	1000	0.1-1	1-10	68
FP(FL/FA)020	2200	0.3-2	3-20	72
FP(FL/FA)025	1800	0.3-2.5	3-25	72
FP(FL/FA)035	1000	0.5-3.5	5-35	72
FP(FL/FA)045	800	0.8-4.5	8-45	72
FP(FL/FA)050	550	1-5	10-50	72
FP(FL/FA)060	2200	1-6	10-60	76
FP(FL/FA)075	1000	1.2-7.5	12-75	76
FP(FL/FA)110	550	3-11	30-110	76
FP(FL/FA)180	300	3-18	30-180	76
FP(FL/FA)280	250	5-28	50-280	76

● Oil Free Full Auto Shut-off Air Screwdriver ●

► High Torque & Low Noise



Model No.	Free Speed (r.p.m.)	Torque range $\pm 2\%$		Noise (± 2 dB)
		Nm	Kgf-cm	
FPF(FLF/FAF)4002	1000	0.05-0.22	0.5-2.2	67
FPF(FLF/FAF)4012	1000	0.1-1.2	1-12	67
FPF(FLF/FAF)4020	2200	0.3-2	3-20	67
FPF(FLF/FAF)4025	1800	0.3-2.5	3-25	67
FPF(FLF/FAF)4035	1000	0.5-3.5	5-35	67
FPF(FLF/FAF)4050	800	1-5	10-50	67
FPF(FLF/FAF)4090	1000	1.5-9	15-90	72
FPF(FLF/FAF)4120	550	3-12	30-120	72
FPF(FLF/FAF)4200	300	3-20	30-200	72
FPF(FLF/FAF)4280	250	5-28	50-280	72



One pulse with $\pm 3\%$ low deviation (Pat. No. 149380), **MSC** cross-path patent clutch system.



Torque Cover
To avoid the adjustment by operator and easy to mark the torque through the window.



External Torque Adjustment Ring Turn right to increase and left to decrease.



Attached 2 pcs high quality **T.I.C.N.** bits which electroplated with durable material (Hv1800 2-3u) for longer operation. Single(9mm), Double(12mm).



(One-handed operation)
Turn and change the rotary direction.

360° swivel Air Inlet



Torque Rings

SUMAKE Color Rings give you an easily visible torque marking system at a glance. Choice the color for each torque level used on your assemble line.



High technologic patent **MCL** motor with more 30% power than general type. (Pat. No. 151110)

Comfort

Uniquely shaped soft resin for ergonomic grip "Top Wave" ergonomic design, best balance and easy to grip. The grip made thermoplastic elastomer, the best material so far, with good touch and anti-glossy feature.



Wide-ranging torque and low vibration.



Speediness

Operator can change the bit rapidly by pull the bit sleeve.

Our technical Air Screwdriver

FPF4280 made by high technologic motor output wide-ranging torque 5-28N.m, Noise only 74dBA & Light Weight 900g

● Full-auto Shut Off Air Open-end Wrench

Features:

- Extremely easy and useful to tighten things up in limited spaces, for example: compressor assembly, refrigerator pipes or automobile breaking system pipes and so on.
- Variety gear socket size to fits in different assembly situation
- Ergonomics design to be easy grip with less fatigue and the reduced thickness of the head also good for the operators work in any circumstance.



Trumpet-type muffler desing for easy grip.

HOW(R)08-6~08-12

3~8 Nm; Gear Socket 6~12mm; Head size: 42mm

HOW(R)17-6~17-12

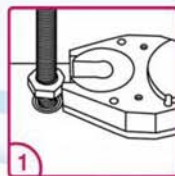
5~17 Nm; Gear Socket 6~12mm; Head size: 42mm

HOW(R)17-13~17-14

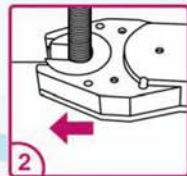
5~17 Nm; Gear Socket 13~14mm; Head size: 56mm

HOW(R)24-15~24-22

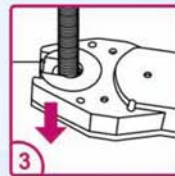
7~24 Nm; Gear Socket 15~22mm; Head size: 56mm



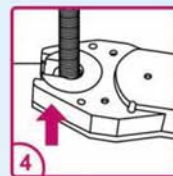
1 Press lever for releasing, back to the open position.



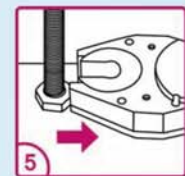
2 Slide on the fastener



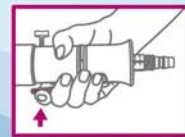
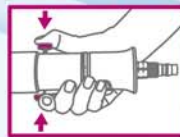
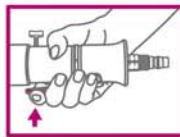
3 Press the button and lever at same time for tightening up.



4 Slide off the tightened fastener to free the tool.



5 Press the lever to release, back to the open position.



● Oil-Free Shut Off Air Wrench 3/8" Square Anvil

Features:

- Extended body for comfortable operation and less reaction.
- Oil-free motor, the power keeps stable at top capability without any oil injection.
- With 3rd generation patented cross-path MSC clutch and special mechanical structure, the tool accords with ISO5393 B class CPK value torque deviation request(CPK value > 1.33).
- The patented one pulse clutch system has also the feature of low vibration (less than 2.5ms²), less torque deviation(±3%) and wide torque range.

LESS COUNTERFORCE



High Torque

HAWFHE200H

5~20 Nm; 1,200rpm

HAWFHE250

5~25 Nm; 430rpm

HAWFHE400

10~40 Nm; 250rpm

HAWFHE600

35~60 Nm; 180rpm



2013C-AD

Industrial Air Screwdriver



*Air Inlet could be 3 way option.

Push start / Push-Trigger start shut off air screwdriver



APP35 3-20Kgf-cm(0.3-2Nm) 2200rpm
APP38 3-25Kgf-cm(0.3-2.5Nm) 1800rpm
APP41 5-35Kgf-cm(0.5-3.5Nm) 1000rpm
APP47 10-50Kgf-cm(1-5Nm) 550rpm
<Small Body> -Light Weight-
 Noise Level 72



APP48 10-60Kgf-cm(1-6Nm) 2200rpm
APP55 12-75Kgf-cm(1.2-7.5Nm) 1000rpm
APP60 30-110Kgf-cm(3-11Nm) 550rpm
APP65 30-180Kgf-cm(3-18Nm) 300rpm
APP68 50-280Kgf-cm(5-28Nm) 250rpm
<Standard Body>
 Noise Level 76

Trigger start shut off air screwdriver



ABP35 3-20Kgf-cm(0.3-2Nm) 2200rpm
ABP38 3-25Kgf-cm(0.3-2.5Nm) 1800rpm
ABP41 5-35Kgf-cm(0.5-3.5Nm) 1000rpm
ABP47 10-50Kgf-cm(1-5Nm) 550rpm
<Small Body> -Light Weight-
 Noise Level 72



*Model AWP48 ~ AWP68
 With 3/8" Square driver



ABP48 10-60Kgf-cm(1-6Nm) 2200rpm
ABP55 12-75Kgf-cm(1.2-7.5Nm) 1000rpm
ABP60 30-110Kgf-cm(3-11Nm) 550rpm
ABP65 30-180Kgf-cm(3-18Nm) 300rpm
ABP68 50-280Kgf-cm(5-28Nm) 250rpm
<Standard Body>
 Noise Level 76

Push start / Push-Trigger start Cushion air screwdriver



ACP39 5-50Kgf-cm(0.5-5Nm) 1600rpm
ACP45 5-70Kgf-cm(0.5-7Nm) 750rpm
<Small Body> -Light Weight-
 Noise Level 72
Option:

*ACPN is for trigger start (w/o lock pin).

*ACPT is for push trigger to start (w/o lock pin) Ex. ACPT39.

*ACSP is push start. Standard air inlet is from only rear. Other air inlet direction please specify (w/o lock pin).



ACP48 10-70Kgf-cm(1-7Nm) 1700rpm
ACP58 10-30Kgf-cm(1-13Nm) 750rpm
<Standard Body>
 Noise Level 76

Trigger start Direct air drill



ADDN26 6mm(1/4") 2900rpm
<Small Body> -Light Weight-



ADDN39 10mm(3/8") 1600rpm
<Small Body> -Light Weight-



ADDN48 10mm(3/8") 1700rpm
ADDN58 10mm(3/8") 750rpm
ADDN458 13mm(1/2") 750rpm
<Standard Body>



*Side handle for ADDN458 type

SUMAKE Industrial Co., Ltd.

4F, No.351, Yangguang St., Neihu District, Taipei, Taiwan, Zip:114-91

Tel: 886-2-2659-3500 Fax: 886-2-2659-3700 http://www.sumake.com e-mail: sales@sumake.com.tw